

www.indiratrade.com



MONDAY

CURRENCY COMMODITIES

WEEKLY REPORT
27 MAY 2019 TO 31 MAY 2019

EDGE



INDIRA SECURITIES PVT. LTD.



WEEKLY INDICES CHANGES

INDEX	CLOSE	PREV. CLOSE	Change (%)
SENSEX	39434.72	37462.99	5.26%
NIFTY	11,844.10	11278.9	5.01%
DOW	25585.7	25942.4	-1.37%
NASDAQ	7637.01	7916.94	-3.54%
FTSE	7277.73	7203.29	1.03%
NIKKEI	21157	21207.5	-0.24%
DAX	12,011.00	12059.8	-0.40%
CAC	5,316.51	5327.44	-0.21%

SS

Market Round Up:

- U.S. Dollar Slips on Trade Uncertainty as Euro Rises: - The U.S. dollar slipped on Friday as traders digested the impact of see-saw trade headlines on the stronger greenback.
- U.S. manufacturing activity on Thursday hit its lowest level in almost a decade in May, which could mean the U.S. economy is slowing down.
- Trade tensions eased Friday after U.S. President Donald Trump said that a deal with China could include Huawei in some form. The administration has put the Chinese tech giant on a blacklist, causing a rippling effect among technology firms around the globe.
- The euro might have also been helped by the Dutch part of the EU parliamentary elections, in which an exit poll showed the Labour party of European Commissioner Frans Timmermans won a surprise victory over a Eurosceptic challenger who had been topping opinion surveys. Euro has been pinned lower in recent weeks by the prospect of Eurosceptic parties across the continent performing well in the elections.
- Wall Street gains on trade reprieve ahead of long weekend: - U.S. stocks gained on Friday, ahead of a long Memorial Day weekend, as investors breathed a sigh of relief after President Donald Trump indicated that the protracted trade war with China could end soon.

RBI REFERENCE RATE

INDEX	CLOSE	PREV. CLOSE
USDINR	69.6096	70.1666
EURINR	77.9744	78.4336
JPYINR	63.5500	64.0300
GBPINR	88.3021	89.7276

FII FIGURES

DATE	FII FIGURES IN CRORE
20/05	1734.45
21/05	1185.44
22/05	-965.02
23/05	1352.2
24/05	2,026.33
NET	+5333

DII FIGURES

DATE	DII FIGURES IN CRORE
20/05	-542.71
21/05	-1090.32
22/05	-157.75
23/05	-593.54
24/05	-195.35
NET	-2580



DOLLAR INDEX CHART



US Dollar Index	
RSI(14)	BUY
STOCH(9,6)	BUY
STOCHRSI(14)	SELL
MACD(12,26)	BUY
ADX(14)	SELL
Williams %R	BUY
CCI(14)	BUY
Highs/Lows(14)	BUY
Ultimate Oscillator	BUY
ROC	BUY
BUY	7
SELL	2
NEUTRAL	0
SUMMARY	STRONG BULLISH

USDINR TECHNICAL CHART (INDIAN RUPEE)



USDINR.Rolling	
RSI(14)	SELL
STOCH(9,6)	SELL
STOCHRSI(14)	BUY
MACD(12,26)	BUY
ADX(14)	SELL
Williams %R	NETURAL
CCI(14)	SELL
Highs/Lows(14)	0
Ultimate Oscillator	BUY
ROC	SELL
	SELL
BUY	3
SELL	6
NEUTRAL	1
SUMMARY	MILD BEARISH



DOMESTIC CURRENCY

Domestic	S2	S1	PIVOT	R1	R2
USDINR	69.74	70.01	70.36	70.63	70.98
EURINR	77.84	78.21	78.86	79.23	79.88
GBPINR	88.05	88.89	90.48	91.32	92.91
JPYINR	63.36	63.74	64.27	64.65	65.18

GLOBAL CURRENCY

Global	S2	S1	PIVOT	R1	R2
DOLLAR INDEX	96.68	97.34	97.69	98.35	98.7
EURUSD	1.11	1.12	1.12	1.13	1.13
GBPUSD	1.26	1.27	1.29	1.3	1.32
USDJPY	108.79	109.17	109.51	109.89	110.23

CURRENCY PERFORMANCE

CURRENCY	CLOSE PRICE	DAY	WEEK	MONTHLY	YEARLY
EURO	1.12115	0.08%	0.37%	0.57%	-3.53%
POUND	1.273	0.14%	0.03%	-1.46%	-4.36%
AUSTRALIAN DOLLAR	0.69306	0.11%	0.35%	-1.60%	-8.13%
NEWZEALAND DOLLAR	0.65527	0.03%	0.32%	-1.71%	-5.59%
YEN	109.45	0.15%	-0.54%	-1.93%	0.04%
YUAN	6.90637	-0.12%	-0.45%	2.50%	7.99%
SWISS FRANC	1.0025	0.09%	-0.58%	-1.67%	0.92%
CANADIAN DOLLAR	1.34453	0.07%	0.15%	-0.08%	3.52%
MEXICAN PESO	19.0471	0.03%	-0.07%	0.18%	-2.75%
INDIAN RUPEE	69.369	0.00%	-0.32%	-0.62%	2.93%
BRAZILIAN REAL	4.0213	-0.45%	-1.91%	1.73%	7.69%
RUSSIAN RUBBLE	64.4843	0.10%	-0.41%	-0.26%	3.51%
DOLLAR INDEX	97.57	-0.04%	-0.36%	-0.42%	3.60%
KORREAN WON	1183.62	-0.10%	-0.89%	2.14%	10.17%
SOUTH AFRICAN RAND	14.3979	0.06%	0.13%	0.61%	15.62%
SINGAPORE DOLLAR	1.37346	-0.10%	-0.21%	0.89%	2.31%
HONGKONG DOLLAR	7.8487	0.00%	-0.01%	0.07%	0.05%

COMMODITIES

FUNDAMENTAL OF COMMODITIES

MAJOR COMMODITIES

MCX ENERGY WEEKLY

Commodity	S2	S1	Pivot	R1	R2
Crude oil	4190.7	4303.3	4388.7	4501.3	4586.7
Natural Gas	178.2	182.2	185.4	189.4	192.6

MCX BASE METAL WEEKLY

Commodity	S2	S1	Pivot	R1	R2
Copper	420.2	424.2	428.3	432.3	436.4
Zinc	209.4	212.4	215.2	218.2	221.0
Lead	123.2	125.6	127.4	129.8	131.7
Nickel	811.4	828.4	845.2	862.2	879.0

PRECIOUS METAL WEEKLY

Commodity	S2	S1	Pivot	R1	R2
Gold	31245.0	31518.0	32028.0	32301.0	32811.0
Silver	35721.7	36149.3	36955.7	37383.3	38189.7

International Commodity	S2	S1	Pivot	R1	R2	CMP	PREV CLOSE
Gold COMEX	\$1,256.00	\$1,266.00	\$1,285.00	\$1,295.00	\$1,314.00	\$1,285.00	\$1,276.00
SILVER COMEX	14.06	14.22	14.55	14.71	15.04	14.61	14.39
NYMEX CRUDE	59.35	61.05	62.35	64.05	65.35	57.91	62.76
BRENT CRUDE	68.09	70.1	71.73	73.74	75.37	68.01	72.11

Updates:

- Gold falls, but stays on track for weekly win after reasserting haven role: - Gold futures edged lower Friday but were on track for a weekly win after seeing renewed haven demand on the back of trade-war worries. Gold's safe-haven demand has underperformed other flight-to-safety assets throughout the recent trade war escalation.
- US rig count adds nine on week, despite Permian drop: Platts Analytics: - US oil and natural gas rigs totaled 1,074 for the week ended May 22, according to data by S&P Global Platts Analytics. This represents a net increase of nine from the prior week's 1,065 and down 89 from the same week a year ago. US oil and gas rigs permits, an indicator of future activity, totaled 965 for the week ended May 22, down five from the prior week and up 17 from the same week a year ago.



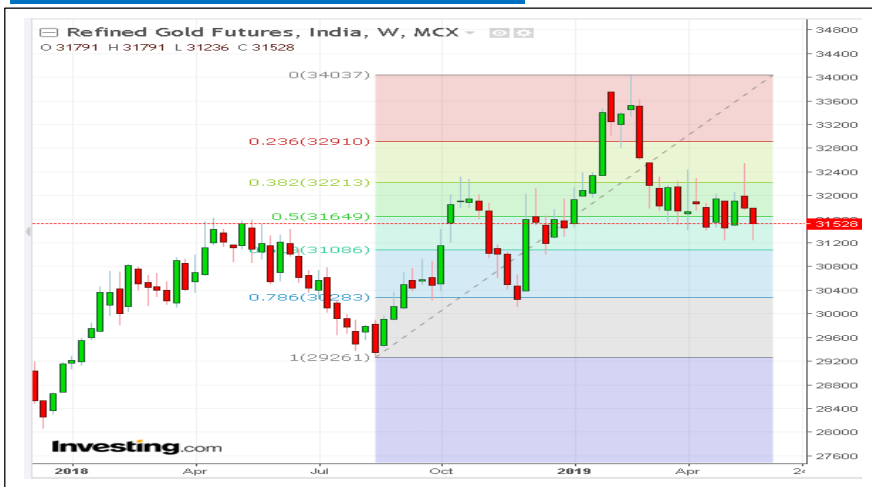
COMMODITIES

MAJOR COMMODITIES

Commodity Major	Price	Day	Weekly	Monthly	Yearly
Crude Oil	58.354	-0.29%	-7.53%	-7.24%	-13.15%
Brent	68.606	0.06%	-4.67%	-4.32%	-8.89%
Natural gas	2.6042	0.15%	-2.57%	0.44%	-11.72%
Gold	1286.54	0.16%	0.70%	0.54%	-0.87%
Silver	14.6275	0.34%	1.11%	-1.88%	-11.21%
Platinum	802.57	0.07%	-1.10%	-10.23%	-10.92%
Palladium	1329.05	-0.45%	0.00%	-3.02%	34.66%
Copper	2.7147	0.13%	-0.77%	-6.22%	-11.12%
Lead	1815.25	1.11%	0.11%	-5.32%	-25.23%
Aluminum	1800	0.14%	-2.01%	-3.07%	-20.88%
Tin	19300	-0.13%	-1.03%	-2.62%	-5.51%
Zinc	2560	1.59%	-1.54%	-6.60%	-17.13%



MCX GOLD CHART



Commodity	S2	S1	Pivot	R1	R2
Gold	31245.0	31518.0	32028.0	32301.0	32811.0

GOLD TECHNICAL INDICATOR	
RSI(14)	SELL
STOCH(9,6)	SELL
STOCHRSI(14)	BUY
MACD(12,26)	SELL
ADX(14)	SELL
Williams %R	SELL
CCI(14)	SELL
Highs/Lows(14)	BUY
Ultimate Oscillator	SELL
ROC	SELL
BUY	2
SELL	8
NEUTRAL	0
SUMMARY	STRONG BEARISH

GOLD INTERNATIONAL CHART



Commodity	S2	S1	Pivot	R1	R2
Gold	\$1,256.0	\$1,266.0	\$1,285.0	\$1,295.0	\$1,314.0

GOLD INTERNATIONAL TECHNICAL INDICATOR	
RSI(14)	BUY
STOCH(9,6)	BUY
STOCHRSI(14)	BUY
MACD(12,26)	SELL
ADX(14)	SELL
Williams %R	NETURAL
CCI(14)	SELL
Highs/Lows(14)	BUY
Ultimate Oscillator	SELL
ROC	SELL
BUY	4
SELL	5
NEUTRAL	1
SUMMARY	NETURAL



MCX SILVER CHART



Commodity	S2	S1	Pivot	R1	R2
Silver	35721.7	36149.3	36955.7	37383.3	38189.7

SILVER TECHNICAL INDICATOR	
RSI(14)	SELL
STOCH(9,6)	SELL
STOCHRSI(14)	SELL
MACD(12,26)	BUY
ADX(14)	SELL
Williams %R	NETURAL
CCI(14)	BUY
Highs/Lows(14)	BUY
Ultimate Oscillator	SELL
ROC	BUY
BUY	1
SELL	9
NEUTRAL	0
SUMMARY	STRONG BEARISH

SILVER INTERNATIONAL CHART



Commodity	S2	S1	Pivot	R1	R2
Silver	\$14.1	\$14.2	\$14.6	\$14.7	\$15.0

SILVER INTERNATIONAL TECHNICAL INDICATOR	
RSI(14)	SELL
STOCH(9,6)	SELL
STOCHRSI(14)	BUY
MACD(12,26)	SELL
ADX(14)	SELL
Williams %R	SELL
CCI(14)	SELL
Highs/Lows(14)	BUY
Ultimate Oscillator	BUY
ROC	SELL
BUY	3
SELL	7
NEUTRAL	0
SUMMARY	STRONG BEARISH



MCX COPPER CHART



Commodity	S2	S1	Pivot	R1	R2
Copper	420.2	424.2	428.3	432.3	436.4

COPPER TECHNICAL INDICATOR

RSI(14)	SELL
STOCH(9,6)	SELL
STOCHRSI(14)	SELL
MACD(12,26)	SELL
ADX(14)	SELL
Williams %R	SELL
CCI(14)	SELL
Highs/Lows(14)	BUY
Ultimate Oscillator	SELL
ROC	SELL
BUY	1
SELL	9
NEUTRAL	0
SUMMARY	STRONG BEARISH

COPPER INTERNATIONAL CHART



Commodity	S2	S1	Pivot	R1	R2
Copper	\$2.670	\$2.710	\$2.740	\$2.770	\$2.810

COPPER INTERNATIONAL TECHNICAL INDICATOR

RSI(14)	SELL
STOCH(9,6)	SELL
STOCHRSI(14)	SELL
MACD(12,26)	SELL
ADX(14)	SELL
Williams %R	SELL
CCI(14)	SELL
Highs/Lows(14)	BUY
Ultimate Oscillator	SELL
ROC	SELL
BUY	1
SELL	9
NEUTRAL	0
SUMMARY	STRONG BEARISH



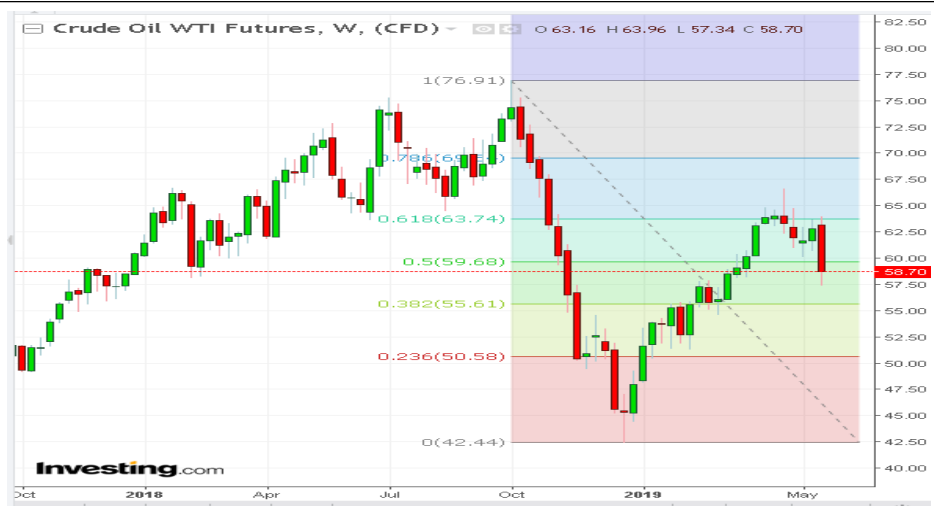
MCX CRUDE CHART



Commodity	S2	S1	Pivot	R1	R2
Crude oil	4190.7	4303.3	4388.7	4501.3	4586.7

CRUDEOIL TECHNICAL INDICATOR	
RSI(14)	SELL
STOCH(9,6)	SELL
STOCHRSI(14)	SELL
MACD(12,26)	BUY
ADX(14)	SELL
Williams %R	NETURAL
CCI(14)	SELL
Highs/Lows(14)	BUY
Ultimate Oscillator	SELL
ROC	BUY
BUY	2
SELL	6
NEUTRAL	1
SUMMARY	STRONG BEARISH

NYMEX CRUDE CHART



Commodity	S2	S1	Pivot	R1	R2
Crude oil	\$59.4	\$61.1	\$62.4	\$64.1	\$65.4

CRUDE.OILNYM TECHNICAL INDICATOR	
RSI(14)	SELL
STOCH(9,6)	SELL
STOCHRSI(14)	SELL
MACD(12,26)	BUY
ADX(14)	SELL
Williams %R	NETURAL
CCI(14)	SELL
Highs/Lows(14)	BUY
Ultimate Oscillator	SELL
ROC	BUY
BUY	2
SELL	6
NEUTRAL	1
SUMMARY	STRONG BEARISH



MCX NATURAL GAS



NATURALGAS TECHNICAL INDICATOR	
RSI(14)	SELL
STOCH(9,6)	BUY
STOCHRSI(14)	SELL
MACD(12,26)	BUY
ADX(14)	SELL
Williams %R	NETURAL
CCI(14)	SELL
Highs/Lows(14)	BUY
Ultimate Oscillator	SELL
ROC	SELL
BUY	3
SELL	6
NEUTRAL	1
SUMMARY	MILD BEARISH

Commodity	S2	S1	Pivot	R1	R2
Natural Gas	178.2	182.2	185.4	189.4	192.6

NATURAL GAS INTERNATIONAL



NATURAL GAS INTER. TECHNICAL INDICATOR	
RSI(14)	SELL
STOCH(9,6)	BUY
STOCHRSI(14)	SELL
MACD(12,26)	SELL
ADX(14)	SELL
Williams %R	NETURAL
CCI(14)	SELL
Highs/Lows(14)	BUY
Ultimate Oscillator	SELL
ROC	SELL
BUY	2
SELL	7
NEUTRAL	1
SUMMARY	STRONG BEARISH

Commodity	S2	S1	Pivot	R1	R2
Natural Gas	\$2.540	\$2.590	\$2.630	\$2.670	\$2.710



204 Amardarshan Building 3rd floor Saket Nagar , Indore-452018

Call: 0731-4797170-173 **Mob:** +91-9303172345 / **Toll Free:** 18001030059 / **SMS:** <INDIRA> to 56070

DISCLAIMER

This report is for private circulation within the Indira Group. This report is strictly confidential and for information of the selected recipient only and may not be altered in any way, transmitted to, copied or distributed, in part or in whole, to any other person or to the media or reproduced in any form. This report should not be construed as an offer or solicitation to buy or sell any securities or any interest in securities. It does not constitute a personal recommendation or take into account the particular investment objectives, financial situations, or any such factor. The information, opinions estimates and forecasts contained here have been obtained from, or are based upon, sources we believe to be reliable, but no representation of warranty, express or implied, is made by us to their accuracy or completeness. Opinions expressed are our current opinions as of our current opinions as of the data appearing on this material only and are subject to change without notice.